

# More!

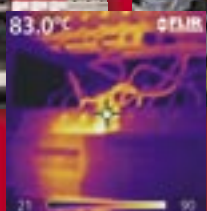
## InfraCAM™



**NEW! InfraCAM SD model with...**

- **More** images (storage of 1,000 on SD card)
- **More** image quality (0.12°C NETD)
- **More** ease of use

\* Now new powerful "QuickReport" software included!



Detect hidden faults



Make quick inspections



Prevent damage



# InfraCAM™, find hidden faults in electrical installations fast

## Locate problems fast

In production plants, office facilities, hospitals or hotels, the InfraCAM instantly makes hot spots visible on a clear thermal image prior to failure. Detect the problem area and repair it before real problems occur. Common electrical targets are fuses, electrical panels, bolted connections and switchgear.

## Work safely and see temperatures

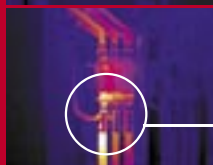
The InfraCAM allows you to measure the temperature of any object you are looking at in a non-contact mode, without putting yourself in danger. A crosshair or an area in the thermal image allows you to measure either the point value or the max or min value. Detect the most diverse electrical problems instantaneously by seeing them on a thermal image.

## Document your work

InfraCAM stores 1,000 images in standard JPEG format. Insert your images directly in to e-mail, Word® or PowerPoint®. The images are also compatible with all of FLIR's more advanced software. This enables you to use all images, cameras and software together.



Avoid fires



Avoid unplanned shut-downs



Find the faults faster



Verify repairs



Evaluate new installations



## Easy-to-use

InfraCAM is lightweight and ergonomically designed for industrial environments. The camera with the one-hand grip is intuitive to operate. You simply point, shoot and capture your IR images.



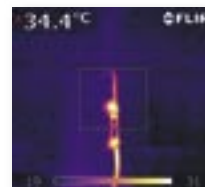
## Image Quality

Now with improved sensitivity (0.12 NETD). See smaller temperature differences and get sharper images on the large LCD and in the reports.



## Image storage

Now with SD card that stores up to 1,000 infrared images. Move standard JPEG images to a computer without cables.



## Faster to measure

Now even easier to use with the "Area min-max function" that instantly finds the hottest or coldest temperature of a target and eliminates the risk of missing key information.



## QuickReport software

Powerful, easy-to-use software for downloading images, making analysis and reports.

## Technical specifications

### Imaging performance

|                        |  |
|------------------------|--|
| Field of view          | 25° x 25°  |
| Minimum focus distance | 0.12 m   |
| Detector type          | Focal Plane Array (FPA), uncooled microbolometer, 120 x 120 pixels |
| Focus                  | Manual   |

### Image presentation

|         |                            |
|---------|----------------------------|
| Display | 3.5" color LCD, 16K colors |
|---------|----------------------------|

### Measurement

|                            |   |
|----------------------------|---|
| Temperature range          | -10°C to +350°C   |
| Accuracy                   | ±2°C, ±2% of reading  |
| Thermal sensitivity / NETD | 0.12°C at 25°C  |
| Measurement mode           | Spot in the middle, Area min. and max.                              |
| Menu controls              | Palettes (color or black and white), auto-adjust (automatic/manual) |
| Set-up controls            | Date/time, language, power down, display intensity                  |
| Measurement corrections    | Emissivity variable from 0.1 to 1.0                                 |

### Image storage

|              |  |
|--------------|--|
| Type         | 1,000 images. Removable SD Card (128 Mbyte included) |
| File formats | Standard radiometric JPEG                            |

### Laser locatIR

|                |  |
|----------------|--|
| Classification | Class 2  |
| Type           | Semiconductor AlGaInP Diode Laser:1mW/635 nm red |

### Battery system

|                 |  |
|-----------------|--|
| Operating time  | 7 hours continuous operation. Display shows battery status |
| Charging system | In camera, AC adapter                                      |
| AC operation    | AC adapter 90-260 V AC, 50/60 Hz                           |
| Input voltage   | 11-16 V DC   |

### Environmental specification

|                             |                |
|-----------------------------|----------------|
| Operating temperature range | -15°C to +50°C |
| Encapsulation               | IP54           |

### Physical characteristics

|                  |                         |
|------------------|-------------------------|
| Weight           | 550 g                   |
| Size (L x W x H) | 243 mm x 81 mm x 103 mm |

### Interfaces

|     |                      |
|-----|----------------------|
| USB | Image transfer to PC |
|-----|----------------------|

### InfraCAM includes:

IR camera, Carrying case, Power supply, Hand strap, USB cable, User manual, Power cord, Battery, 128 Mbyte SD Card, QuickReport software

SPECIFICATIONS ARE SUBJECT TO CHANGE WITHOUT NOTICE

©Copyright 2007, FLIR Systems, Inc. All other brand and product names are trademarks of their respective owners.



**S J ELECTRONICS**  
POWER • TEST & MEASUREMENT

**0800 583 44 55**

Tel: +44 1536 416 200

Fax: 0800 583 55 66

sales@sjelectronics.co.uk

www.sjelectronics.co.uk