



The Global Leader in Infrared Cameras



S J ELECTRONICS  
POWER • TEST & MEASUREMENT

0800 583 44 55

Tel: +44 1536 416 200

Fax: 0800 583 55 66

sales@sjelectronics.co.uk

www.sjelectronics.co.uk

# FLIR P620

INFRARED CAMERA



With many outstanding features found in higher model P-Series cameras, the P620 offers an excellent value for organizations looking for an advanced infrared camera solution.



Wireless Remote



Features both thermal and visual camera capabilities – at the touch of a button!

- > 640 x 480 Infrared Detector
- > Outstanding Thermal Sensitivity: 0.06° C
- > TripleFusion Picture In Picture Technology
- > Upgradeable to P640
- > Optional WLAN remote control and display
- > Target Illuminator for Low-light Areas
- > Voice Annotation with Each Image
- > High Resolution Array for Viewing at Greater Distances

## Easy to Operate

FLIR Systems ThermaCAM P620 is an affordable easy-to-operate high-performance infrared camera that delivers accurate temperature measurements at productive and safe distances. This makes the P620 camera an ideal solution for cost-effective and efficient predictive maintenance programs.

## High Definition 640 X 480 Detector

The P620 infrared camera includes a high-definition 640 X 480 infrared detector that delivers exceptional resolution and image quality for accurate infrared surveys. As a result, accurate readings can be taken on smaller objects at safe distances. Readings can be taken at ±2° C (3.6° F) of reading.

## A Safe Solution

The P620 is upgradeable to the P640 infrared camera for the ultimate investment protection if your needs change or grow. The P620 features a large target-distance to spot-size ratio for accurate measurements and analysis.

## Survey at Safe Distances

Many IR surveys are conducted in high voltage areas. For safety reasons, conductive cabling cannot be used to remotely control cameras. The P620 can be operated with the optional handheld Wireless LAN remote control and display. The P620 includes a viewfinder and high resolution LCD for added flexibility in field operations. The tilt-able viewfinder is ideal for outdoor work, especially in bright sunlight and viewing targets under all lighting conditions. The 5.6" wide screen LCD is a productive solution for indoor viewing of images.

## TripleFusion™



The FLIR TripleFusion takes infrared thermography to a new level by overlaying the rich detail of an infrared image over a hi-res visible light image in real-time, making it easier to identify critical problems more quickly and accurately. FLIR's TripleFusion is fully scalable, permitting you to resize the thermal image as needed.

## Visual Target Illuminator

The P620 visual camera has a target illuminator or lamp for taking pictures in low light areas, such as electrical cabinets. The target illuminator ensures good reference visual images can be documented regardless of the lighting conditions.

## FLIR Reporter Software

Images are easily downloaded and managed using Reporter 8.3 software. Images can be emailed, and viewed in Microsoft Windows programs without the need for any additional proprietary software. Reporter software offers trending and image fusion for easy blending of infrared and digital photos. With Automatic Report Generation, you can easily create reports to combine all your inspection information.

## Productive Auto Focus

Manual and Auto Focus capabilities allow operators greater flexibility when collecting images in a range of settings. Auto Focus is helpful for hard to focus situations and allows new users to be productive sooner.

## Safety Enhancing Laser Locator

The laser locator on the P620 helps associate the hot spot on the IR image with the exact location of the problem. This feature greatly enhances the user's safety by eliminating the tendency to "finger point" at problems in high voltage and other hazardous environments.

## Voice Annotation with Each Image

The P620 allows the operator to record a full 30 seconds of digital voice and embed it with each IR image. This allows a full description of the target and fault condition to be recorded in the field and then documented in the IR report. In addition, text comments for each image can be entered manually or preloaded from a PC with ThermaCAM Reporter software.

## 3 hours Run-Time on a Single Battery

The P620 includes an intelligent charging station capable of conditioning and charging two 3-hour batteries at a time. In addition, like a cell phone, you can plug the P620 into an AC outlet or optional 12V cable and charge the battery while still in the camera.

## Infrared Certification Training and Support

In addition to worldwide service and support, FLIR Systems offers Thermographer certification classes at its state-of-the-art facilities near Boston, Massachusetts. The FLIR Systems Infrared Training Center (ITC) is the Global leader in IR Thermography Training.

# FLIR P620 Technical Specifications

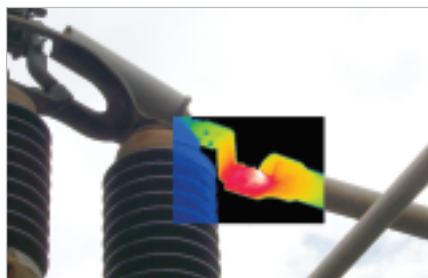
Imaging Performance	
<b>Thermal</b>	
Field of view/min focus distance	24° x 18° / 0.3 m
Spatial resolution (IFOV)	0.65 mrad
Thermal sensitivity @ 50/60Hz	65 mK at 30° C (86° F)
Electronic Zoom	2x Zoom
Focus	Automatic or manual
Digital image enhancement	Normal and enhanced
Detector type	Focal plane array (FPA) uncooled microbolometer; 640 x 480 pixels
Spectral range	7.5 to 13 µm
<b>Visual</b>	
Built-in digital video	3.2 Mpixel, full color / built-in Target Illuminator / exchangeable lens
Standard lens performance	f=8 mm / FOV 32°
Image Presentation	
Image fusion	Picture in Picture (PIP) with full control of IR window, threshold above, threshold below, threshold interval
Viewfinder	Built-in, tiltable, high-resolution color viewfinder (800 x 480 pixels)
External display	Built-in 5.6" LCD (1024 x 600 pixels)
Video output	RS170 EIA/NTSC or CCIR/PAL composite video
Measurement	
Temperature ranges	-40°C to +500°C, in 2 ranges; up to + 2000°C, optional (-40 to 932° F with option to 3,632° F)
Accuracy (% of reading)	± 2 °C or ± 2% of reading
Measurement modes	3 Spots/Areas (Boxes, Circles), Isotherms (above, below, interval), Delta T
Menu controls	Palettes, load custom palettes, auto adjust (manual/continuous/based on histogram equalization), image gallery, periodic storage
Emissivity correction	Variable from 0.1 to 1.0 or select from listings in pre-defined material list
Measurement features	Automatic corrections based on user input for reflected ambient temperature, distance, relative humidity, atmospheric transmission, and external optics
Optics transmission correction	Automatic, based on signals from internal sensors
Image Storage	
Type	Removable SD-card (1 GB)
File format – THERMAL	Standard JPEG; 14 bit thermal measurement data included
File format –VISUAL	Standard JPEG inked with corresponding thermal image
Voice annotation of images	30 sec. of digital voice "clip" stored together with the image wired headset
Text annotation of images	Predefined by user and stored with image
Laser LocatIR™	
Classification type	Class 2, Semiconductor AlGaInP Diode Laser: 1 mW/635 nm (red)
Power Source	
Battery type	Li-Ion, rechargeable, field-replaceable
Battery operating time	3 hours continuous operation
Charging system	In camera (AC adapter or 12V from car) or 2 bay intelligent charger
External power operation	AC adapter 110/220 VAC, 50/60Hz or 12V from car (cable with standard plug optional)
Power saving	Automatic shutdown and sleep mode (user-selectable)
Environmental	
Operating temperature range	-15° C to +50° C (5° F to 122° F)
Storage temperature range	-40° C to +70° C (-40° F to 158° F)
Humidity	Operating and storage 10% to 95%, non-condensing
Encapsulation	IP 54 IEC 529
Shock	Operational: 25G, IEC 68-2-29
Vibration	Operational: 2G, IEC 68-2-6
Physical Characteristics	
Weight	1.7 kg (3.8 lbs) w/battery
Size	120mm x 145mm x 220mm
Tripod mounting	1/4" – 20

Camera includes:	
Camera with visual and IR lens	
Power supply	
2 batteries (3 hours operating time on each)	
2 bay charging station	
QuickReport software	
Manual and Quick Reference Card	
Headset	
Cables	
Lenses (optional)	
<i>Automatic lens identification</i>	
<b>Field of view/minimum focus distance</b>	
12° x 9° / 0.9m telelens	
45° x 34° / 0.1m wide angle lens	
Close-up 50mm 32 mm x 24 mm / 75 mm	
Interfaces	
USB	Image (thermal and visual), measurement data, voice and text transfer to PC
IrDA	Wireless communication
SD-card (2)	I/O slot; storage slot

**NEW!** RUGGED & LIGHTWEIGHT MAGNESIUM HOUSING!



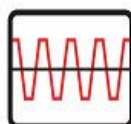
Optional Wireless Local Area Network remote control and display.



FLIR Picture-In-Picture technology



**FLIR**<sup>®</sup>  
The Global Leader in Infrared Cameras



**S J ELECTRONICS**  
POWER • TEST & MEASUREMENT