

## FlukeView® ScopeMeter® software for Windows®






## Technical Data

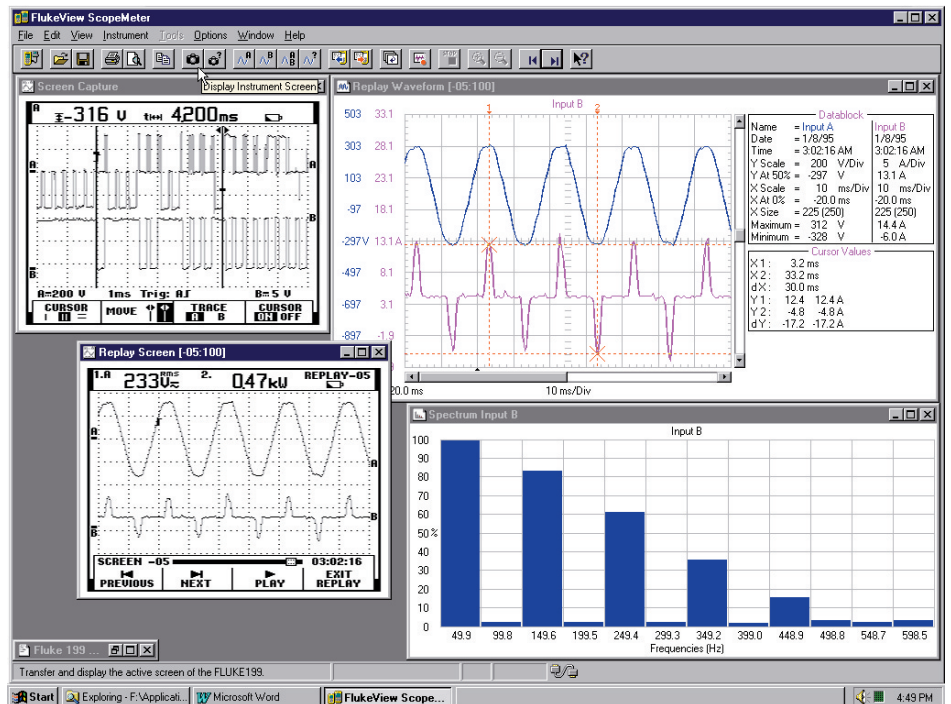
Tune up the performance of your ScopeMeter® test tool.  
Add PC power with FlukeView® ScopeMeter® software  
for Windows® 95/98/NT 4.0

### FlukeView ScopeMeter software

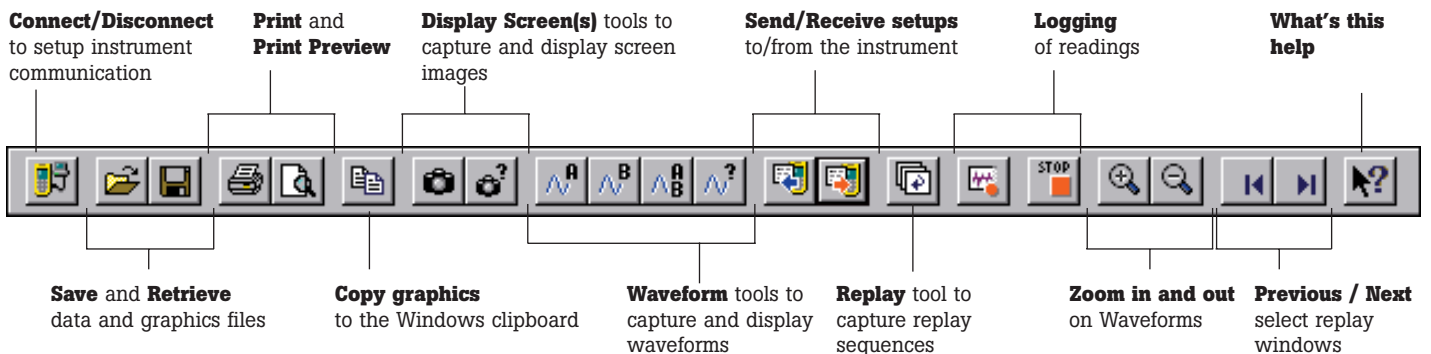
is a Windows package for documenting, archiving and analyzing measurements with Fluke ScopeMeter test tools. For quick mouse access of regular occurring tasks, FlukeView software offers a toolbar with buttons for the most common tasks and functions.

### Data transfer tools include:

-  Capture and display screens from the instrument on the PC
-  Capture and display complete replay sequences of the Fluke 190 Series
-  Capture and display numerical waveform data, ready for detailed analysis
-  Logging of cursor, scope and meter readings for monitoring slow moving signals
-  Capture instrument setups for automating frequent measurement



FlukeView ScopeMeter software for Windows screen example

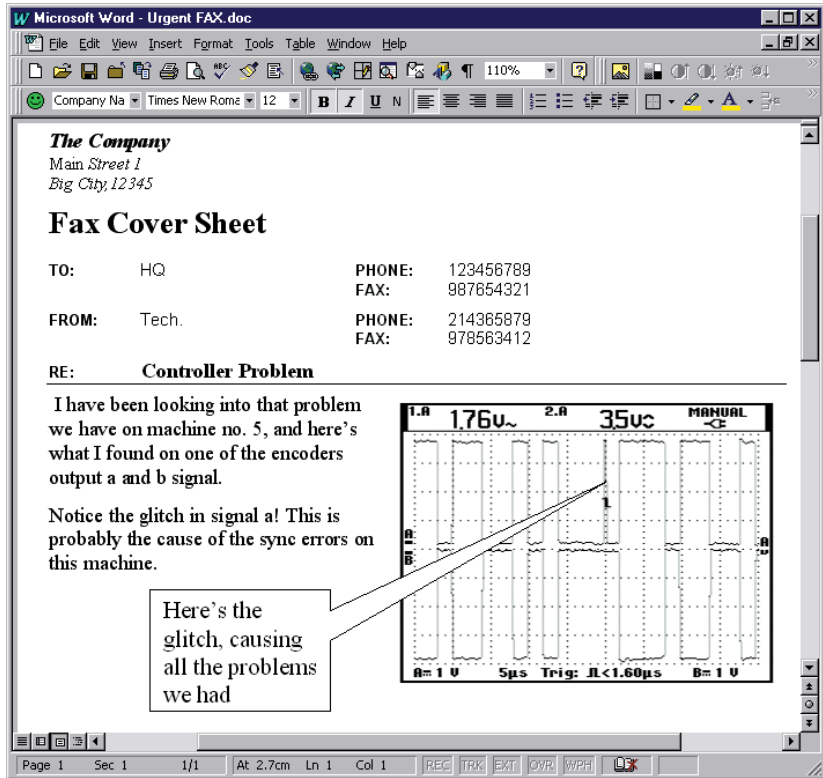


### Transfer screens and data to improve reports

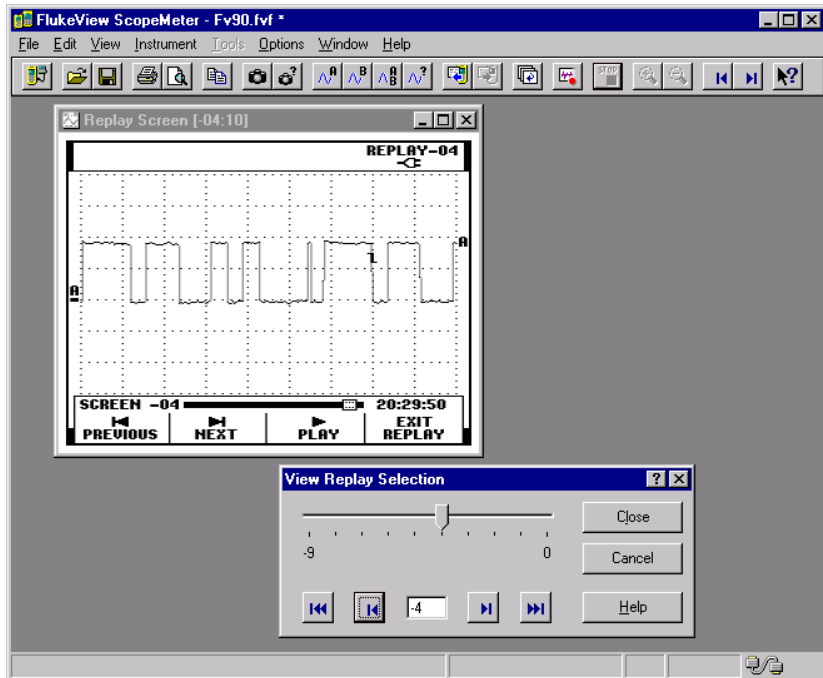
FlukeView software extends the documenting capability of your ScopeMeter. The Display Screen tool captures and displays a replica of the ScopeMeter screen. These graphics can be printed directly from FlukeView or transferred to your word processor for report preparation. You can type descriptive text with the images, to indicate measurement conditions. With the enhanced Print Preview tool you can print multiple windows on a single sheet of paper. The Copy tool lets you copy graphics onto the Windows clipboard, so they can be pasted into other windows applications like word-processors or Fax programs.

### Report creation using DDE

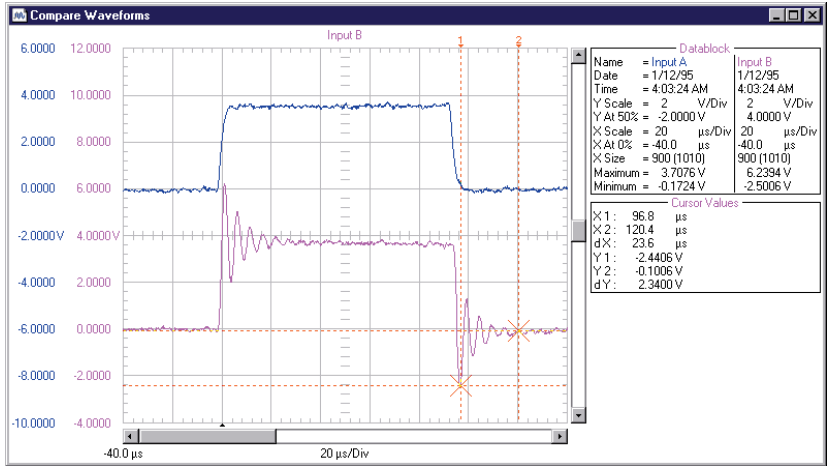
FlukeView supports DDE (Dynamic Data Exchange) for direct transfer of ScopeMeter screen images into other Windows programs. Included are examples for Microsoft Word, that show how to create your own report.



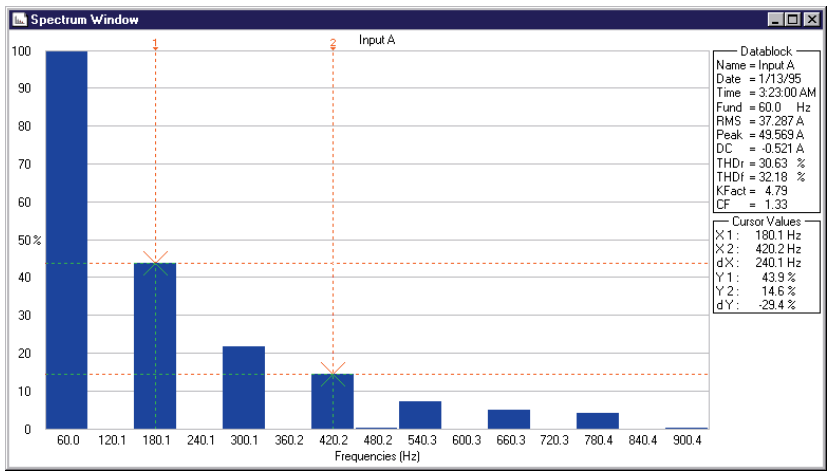
Sample Microsoft Word Screen Shows Imported Fluke 199 Screen Capture



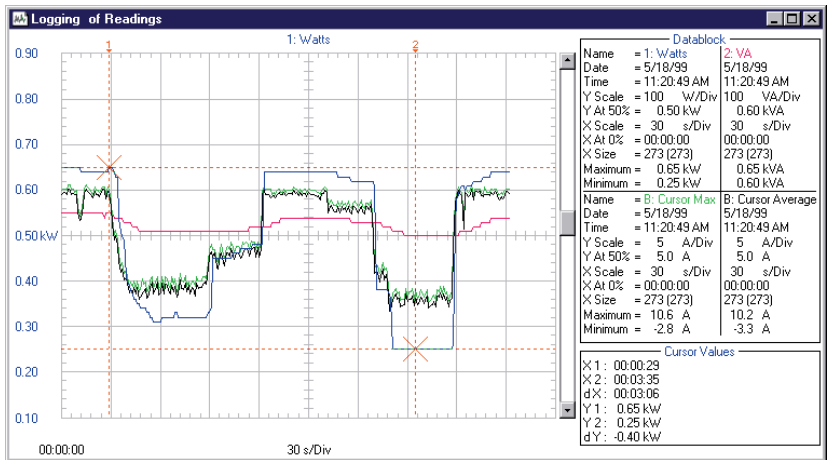
With FlukeView a complete set of 100 Replay screens and waveforms can be displayed and stored on the PC



Comparing known-good waveform from archive (upper) and measured waveform (lower)



Spectrum Analysis Window



Logging of up to four readings in one window

**Build your own archive**  
 FlukeView allows you to save screens and waveform data for future reference and to create your own library of known-good signals. A collection of various screen windows, waveform windows, instrument setups and replay windows of the Fluke 190 Series can be saved in a single file. These FlukeView files use the .FVF filename extension and can contain both data and graphic information. You can save images and data as separate files (.BMP/.PCX/.CSV/.TXT). The available file formats allow you to import graphics and data in virtually any wordprocessing, drawing or spreadsheet program.

**Built-in analysis**  
 The Waveform Tools allow all or some of the waveform memories to be transferred and displayed on your PC as numerical data. A spectrum analysis can be done on the waveform data to detect the presence of harmonics. Measurements of fundamental frequency, true rms voltage, DC voltage, crest factor, K-factor, total harmonic distortion, and peak voltage are provided to help analyze power quality problems. Cursors and zoom functions allow for detailed analysis of your measurements.

**Logging trends**  
 With the Logging Tool you can log digital readings from the instrument. This can be scope, meter or cursor readings. These readings are plotted on a trend graph. After you have stopped logging, you can use the cursor and the zoom functions to analyze the measurement data.

**FlukeView ScopeMeter uses your standard PC interface**

Use your computer's RS-232 serial interface to communicate with the ScopeMeter. The connect dialog box allows you to setup baud rate and serial Com port. Then just click and go. For your safety, the interface cable is optically coupled to provide isolation from printers and computers.

System Requirements:

- Pentium 90 or better
- Windows 95/98/NT 4.0
- Graphics adapters, printers and input devices supported by Windows
- One free RS-232 port
- PM9080 Optically isolated RS-232 adapter/cable

**Supported Instruments**

Supported ScopeMeter models:

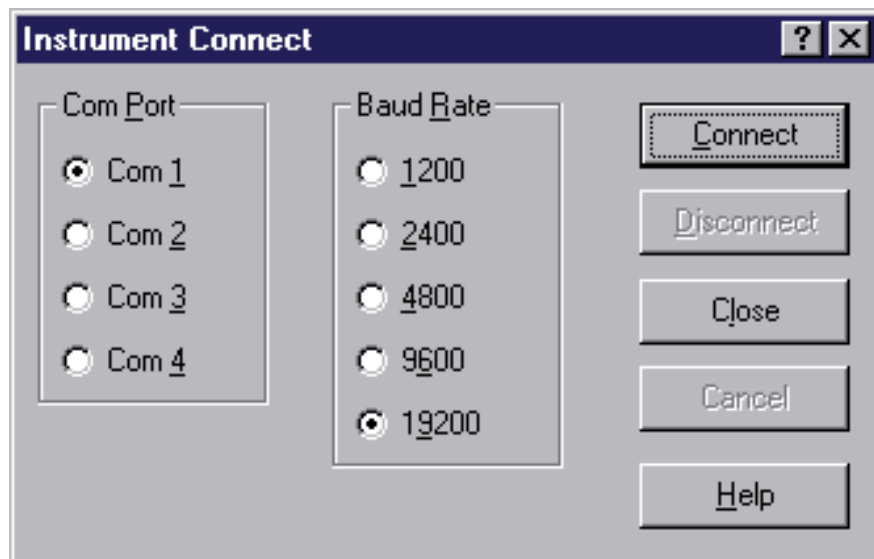
Full Support: Fluke 199, 196, 192, 123, 105B, 105, 99B, 99, 97, and 96B

Hard copy only: Fluke 96, 92B, 92 and 91

**Ordering Information**

- SW90W/033EFG FlukeView ScopeMeter for Windows V3
- SW90W/533EFG: Upgrade version. Version 2.0 or later is required for upgrading
- PM9080 Optically isolated RS-232 adapter/cable

English, French and German language versions are included with FlukeView.



Connect dialog box



**S J ELECTRONICS**  
POWER • TEST & MEASUREMENT

**0800 583 44 55**

Tel: +44 1536 416 200

Fax: 0800 583 55 66

sales@sjelectronics.co.uk

www.sjelectronics.co.uk

**Fluke Corporation**

P.O. Box 9090, Everett, WA 98206

**Fluke Europe B.V.**

P.O. Box 1186,  
5602 BD Eindhoven,  
The Netherlands

For more information call:

In the U.S.A.: (800) 443-5853

or Fax: (425) 356-5116

In Europe/M-East:

+31 (0)40 2 678 200

or Fax: +31 (0)40 2 678 222

In Canada: (905) 890-7600

or Fax: (905) 890-6866

From other countries:

+1(425) 356-5500

or Fax: +1 (425) 356-5116

Web access: <http://www.fluke.com>